



[www.fiat-india.com](http://www.fiat-india.com)

NEW

LINEA



To test drive call 1800-209-5556  
or SMS FIAT to 54242

[facebook.com/fiat.india](https://www.facebook.com/fiat.india) [@fiatindia](https://twitter.com/fiatindia) [YouTube /fiatcarsindia](https://www.youtube.com/channel/UCfj8K8K8K8K8K8K8K8K8K8K)

Disclaimer: Fiat Group Automobiles India Pvt. Ltd. reserves the right to change without notice the colours, prices, equipment specifications and models. Accessories shown in the pictures and features mentioned may not be part of standard equipment and could differ with variants. Actual color of vehicle and upholstery may differ due to printer limitations. \*Conditions apply

If you still like driving, we're still ahead. A person who loves driving doesn't always want to go fast. Or far. He just wants to drive right. The way it is meant to be done. For a person who loves driving, the new Fiat Linea is perfect. Perfect because it combines flair in design with precision in engineering to give you, above all else, a supreme driving experience. When you're at the wheel of the new Linea, you're at one with the car, with yourself and with the world.

## The All New Fiat Linea. Still Ahead.



## Dynamic yet stately.

The new Linea embodies the best of Italian design. Flamboyantly gorgeous on the outside, stylishly ergonomic on the inside. Its beauty aside, its solid build quality and functionality of design make the new Linea nothing short of truly magisterial.



### Strong Build Quality

It's of little surprise that the new Linea boasts of extremely strong and robust build quality. It keeps you safe and more importantly, protects your loved ones.



### Best in class ground clearance

When you're on the road and feeling just a little bit above those around you, there's a good reason why. Glide over potholes, tower over your fellow drivers and generally, just feel a bit taller.



### Redesigned front grille and bumper

The imposing front grille and bumper of the new Linea projects a dominant and dynamic personality that perfectly complements the rest of the new Linea as well as its driver.



### Turn Indicators on ORVM

Like all the little features in the new Linea, the turn indicators enhance the aesthetic appeal of the exterior. They complement its smooth flowing lines and add a hint of dynamism to the Linea's profile. They also provide better visibility for oncoming traffic.



### Longest car in its class

Being the longest car in its class, the new Linea has more legroom for you to enjoy as well as more space to store luggage. So you can stretch out on those long drives out of town.



### Chrome detailing

The new Linea is adorned with slick and gleaming chrome trims on its stylish smiling grille as well as its rear. These highlights add a touch of class and elegance to its beautifully sculpted body.



### Alloy Wheels

The alloy wheels frame the dynamism inherent to the new Linea while adding a touch of magisterial class.



## Designed around you.

The two-tone, soft-touch dashboard features a strikingly bold new instrument cluster and a slick centre console. Its curved ambient line makes it feel like it's built around you whilst also framing the front of the new Linea's cabin. So reach out and fiddle away with your favourite knobs and buttons.



### Bottle holder

This little holder will ensure that your drink is tucked away safely and doesn't spill on your clothes, or worse, the rich beige upholstery.



### Rear armrest with glove box and cup holders

When you kick back in the rear seat of the new Linea, not only will you have a luxurious armrest, you'll have the convenience of a place to keep your coffee as well as other odds and ends. Because the longer you are in the new Linea, the more homely it gets.



### Lots of legroom

Being the longest car in its class, it is of no surprise that the legroom in the new Linea offers supreme comfort. So stretch luxuriantly as you ride away into the sunset.



### Bottle holder on door trims

A cosy little holder for your drink of choice allows you to sit back and not worry about holding it.



### Premium Looking Interiors

The interior of the new Linea is designed to feel premium as well as look it. Made of materials that impart a feel good quality to the cabin, the design is also meant to make the interior easy to navigate. It is a cabin that pampers the occupants and ensures the driver numerous comforts, including plush leather upholstery so as to better enjoy the drive.



### 500 liter boot space

The huge boot offers storage options aplenty, be it picnic baskets or lots of suitcases. Which is nothing less than you'd expect from the new Linea. Because when driving is such a joy, long journeys happen more often than not.

# The magic of convenience

The new Linea is full of little surprises. Be it the Infotainment System, the Rain sensing wipers or Cruise Control, technology has been used in Fiat's inimitable style to give you thoughtful comforts that take the Linea experience to a whole different level. It's convenient, advanced and sometimes, just magical.



## Personalised MY CAR settings

From changing the volume of the alarm buzzer to the colour intensity of your display, the MY CAR system lets you tweak every little aspect of the new Linea's settings.



## Cruise Control

Lets you automatically control the speed of your new Linea. Which allows for greater comfort and fuel economy. So you'll savour long drives even more than usual.



## Rear parking sensors

As well as helping you judge your distances perfectly, you no longer have to crane your neck.



## USB & AUX-IN

Allows you to connect most devices to the brilliant audio system. So plug your music in and blast your tunes on the 6 speaker system.



## Rear air-conditioning vents

Why should those seated in the front have all the fun? Now you get to sit back and be cool.



## Automatic headlamps

These classic GT-inspired headlamps turn on and off based on outside light conditions. So whenever you drive into a tunnel or a basement, the lights conveniently turn on.



## Rain sensing wipers

Wipers that switch on and off automatically, as and when you need them to. So you can safely focus on driving without having to worry about twiddling knobs and levers as and when it rains.



## BLUE&ME™

Feel in charge with BLUE&ME™ voice command activation technology as well as steering wheel controls for changing music, taking calls and having SMS's read aloud.



## The comfort of security

With the new Linea's core philosophy centering on drivability and comfort, extra care was taken to ensure that the new Linea meets stringent safety guidelines. After all, you can't truly savour a great drive if you aren't completely secure.

### Active Safety Features

#### Passive Safety Features

ABS with EBD

Front dual Airbags

3-point ELR seat belts with pre-tensioners and load limiters

### Passive Safety Features

Crumple Zones

Collapsible steering column

High tensile steel frame

Fire Prevention system

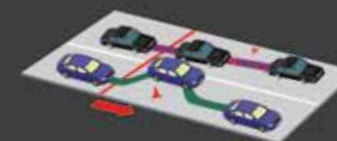
Anti-theft engine immobilizer with rolling code

Remote Keyless entry

Double crank prevention system

Digital door open indicator with specific door notification

Anti-lock Braking System



## The beating heart.

For a car that prides itself on the joy it provides when driven, a great engine is non-negotiable. And the new Linea doesn't disappoint. Drawing on more than a century's worth of racing pedigree, the beating heart of the new Linea embodies the technological advancement that Fiat stands for.



**Multijet**

This award winning\* compact diesel engine powers over 6 million cars worldwide. It offers improved performance, better fuel efficiency, a smoother drive and has set the benchmark for smaller capacity engines.

\*International Engine of the Year in 2005.



**T-JET**

A masterpiece designed to set your heart racing and your adrenaline pumping, this perfectly tuned 1368cc 16 valve T-JET is a turbocharged petrol engine that churns out a whopping 114 PS at a mind-boggling 5000 rpm. And if that doesn't impress you then the 207 Nm of torque at 2200 rpm certainly will.




EXCITING FEATURES

ENGINE & VARIANT	1.4 L T-Jet Petrol 1.3 L Advanced Multijet Diesel Active	1.4 L T-Jet Petrol 1.3 L Advanced Multijet Diesel Dynamic	1.4 L T-Jet Petrol 1.3 L Advanced Multijet Diesel Emotion
SAFETY & SECURITY			
Front & Rear Fog Lamps	S	S	S
3-Point ELR Seat Belts with Pretensioners & Load Limiters		S	S
All four Disc Brakes (T-Jet versions only)	S	S	S
Anti-Lock Braking System (ABS) (*T-Jet Active version only)	S*	S	S
Automatic Door Lock	S	S	S
Central Door Locking	S	S	S
Double Crank Prevention System	S	S	S
Driver Seat Belt Warning Light	S	With Buzzer	
Dual Stage Front Airbags with Early Crash Sensors		S	S
Exact Door Open Indicators	S	S	S
Fire Prevention System (FPS)	S	S	S
Immobiliser with Rolling Code (FCS)	S	S	S
EXTERIOR			
15 inch Alloy Wheels		S	
16 inch Alloy Wheels			S
Chrome Body-Side Moulding			S
Chrome Exhaust Tip (T-Jet versions only)	S	S	S
Dual Parabola Head Lamps	S	S	S
Outside Door Handles	Body Colour	Chrome	
Outside Rear View Mirrors	Body Colour		
Side Indicator on Outside Rear View Mirror	S	S	S
Boot Lid Handle	Body Color	Chrome	Chrome
Chrome front radiator grill	S	S	S
INTERIORS			
Boot Lamp	S	S	S
Dual Tone Dashboard	S	S	S
Front Seat Back Pockets		S	S
Leather Wrap Steering Wheel & Gear Knobs		S	S
Premium Leather Upholstery			S
INSTRUMENTATION			
Auto Switch On/Off Headlamps	S	S	S
Digital Clock	S	S	S
External Temperature Display	S	S	S
Programmable Follow Me Headlamps	S	S	S
Programmed Service Reminder	S	S	S
Rain Sensing Wipers	S	S	S
Real Time Mileage Indicator	S	S	S
Trip Calculator - Range / Mileage / Avg. Speed / Duration	S	S	S
Cruise Control			S
Ambient Light on Dashboard			S
COMFORT & CONVENIENCE			
All 4 Power Windows with 'Delay' & 'Auto Down' Function	S	S	S
Collapsible Rear Sun Curtain			S
Desmodronic Foldable Key	S	S	S
Driver Seat Height Adjust		S	S
Electrically Adjustable Outside Rear View Mirrors	S	S	S
Internal Roof Light with Dimming Effect	S	S	S
Rear Armrest	S		
Rear Armrest with Glove Box & Cup Holders		S	S
Rear Defogger with Timer	S	S	S
Rear Roof Light		S	S
Remote Keyless Entry	S	S	S
Remote Tailgate Open	S	S	S
Tilt Steering	S	S	S
Vanity Mirror	Passenger Side		BothSide (Illuminated)
Front door panel with side pocket and bottle box (0,5 l)	S	S	S
Bottle holder 1 liter in the front seat armrest	S	S	S
Reverse Parking Sensor		S	S
AIR CONDITIONING			
Automatic Climate Control		S	S
Manual HVAC	S		
Rear AC Vents	Foot Level	Foot & Knee Level	
IN - CAR ENTERTAINMENT			
Integrated CD/Mp3 player	S	S	S
Blue & Me™		S	S
Speakers	4	6	6
Steering Mounted Audio Control, Blue & Me™ controls		S	S
USB & AUX in on front console		S	S


TECHNICAL SPECIFICATIONS

VARIANT	1.4L T-JET Petrol	1.3L ADVANCED MULTIJET Diesel
ENGINE		
Camshaft	DOHC	DOHC
Displacement (cc)	1368	1248
Max. Power (ps/rpm)	114/5000	93/4000
Max. Torque (Nm/rpm)	207/2200	209/2000
No. of Valves	16	16
Transmission	5 Speed Manual	
Manual		
SUSPENSION		
Front	Independent Wheel, Helical Coil Springs, Double Acting Telescopic Dampers and Stabiliser Bar	
Rear	Torsion Beam, Helical Coil Springs, Double Acting Telescopic Dampers and Stabiliser Bar	
BRAKES		
Front	Ventilated Disc	
Rear	Solid Disc	Drum
Tyres & Wheels		
Tyres(Tubless)	195/60 R15 & 205/55R16	
Wheels	15" Steel/15" Alloy/16" Alloy	
DIMENSIONS		
Boot Capacity (ltr)	500	500
Fuel Tank Capacity (ltr)	45	45
Ground Clearance (mm)	185/190	185
Kerb Weight (kg)	1220/1236/1258	1236/1255/1268
Overall Height (mm)	1487	1494
Overall Length (mm)	4596	4596
Overall Width (mm)	1730	1730
Wheelbase (mm)	2603	2603


Colour Range:




Tuscan Wine\*




New Pearl White\*




Magnesium Grey\*



Hip Hop Black\*



Sunbeam Gold\*



Minimal Grey\*

\*Premium colours. Additional charges applicable.  
\*Applicable for all cars retailed from 1st April 2013 onwards

FUEL ECONOMY CONSUMER INFORMATION (Test Results of Rule 115 of CMVR)			
Model	Engine (cc)		
Fiat New Linea 1.4 T-JET	1368		
Fuel Type	Fuel Economy		
Petrol	15.7 km/l		
Model	Engine (cc)		
Fiat New Linea 1.3 MULTIJET	1248		
Fuel Type	Fuel Economy		
Diesel	20.4 km/l		

Fiat Linea comes with a warranty of 3 years or 100,000 kilometers (whichever is earlier)<sup>#A</sup>.  
<sup>#</sup>Conditions apply

15

After Sales Service:

**Road Side Assistance (1800-209-5556):**  
We like to make sure that no matter what you're up to, there's no place your Fiat and you can be stranded.

**24x7 helpline (1800-209-5556):**  
If you need any assistance, we're only a phone call away.  
Our call centre is operational 24 hours a day, 7 days a week. So if you have a question, any question, we're here for you.

**3 years warranty - Total Peace of Mind.**  
Each new Fiat is built to the highest possible standards. We put every car through a series of tough tests, checks and inspections before it leaves the factory. Then, from the moment you drive your new car away, it is protected with a three year warranty, giving you total peace of mind.

**Spares & Accessories:**  
Guaranteed to be genuine at all exclusive dealerships.  
The right part at the right price can only be guaranteed by your car's designer and manufacturer. Always choose Fiat Genuine parts and Genuine Accessories, which are tested and guaranteed, to maintain the best performance in terms of safety and fuel consumption. Discover convenient, reliable, guaranteed and environmentally friendly accessories.

Strong presence across the country  
with exclusive Fiat dealerships:

<sup>\*\*</sup>Number of Fiat dealerships as of 4<sup>th</sup> March, 2014.